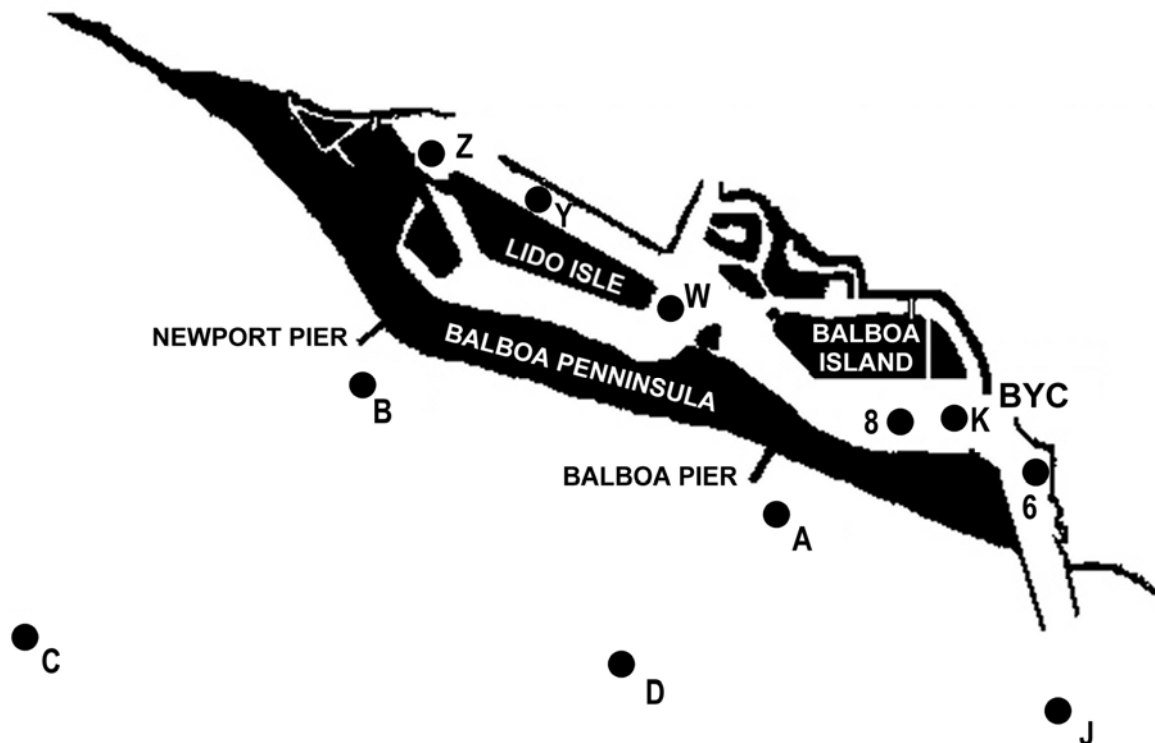


## 2018-2019 Balboa Yacht Club Sunkist Series Outside Course Chart

### COURSES

#	MARKS	DIST(nm)
1	S-W-8-K-F	2.5
2	S-J-F	2.7
3	S-8-W-8-K-F	3.7
4	S-Z-8-K-F	4.3
5	S-Js-A-J-F	5.4
6	S-6-Z-8-K-F	5.6
7	S-Js-D-J-F	6.4
8	S-Js-A-D-J-F	6.6
9	S-Js-D-J-D-J-F	10.1
10	S-Js-B-J-F	8.6
11	S-Js-A-D-J-A-J-F	9.3
12	S-Js-C-J-F	10.4
13	S-Js-B-C-J-F	11.0
14	S-Js-Cs-Bs-J-F	11.0
15	S-Js-B-C-J-A-J-F	13.5
16	S-Js-B-C-J-B-J-F	16.9



The marks of each course are to be rounded to port unless indicated with an "s" suffix.

### MARK BEARINGS (MAGNETIC)

J-A	291°/111°
A-D	234°/054°
D-J	093°/273°
J-B	281°/101°
B-C	214°/034°
C-J	079°/259°

MARK	DESCRIPTION
S	Start Line – Located West of Mark 8. See SAILING INSTRUCTIONS for details
F	Finish Line – Located at BYC Race Tower. See SAILING INSTRUCTIONS for details
A	Orange/Red inflatable shape located approximately 200 yards off of Balboa Pier
B	Orange/Red inflatable shape located approximately 200 yards off of Newport Pier
C	Orange/Red inflatable shape
D	Orange/Red inflatable shape
J	Aid To Navigation Buoy RW "NWP" located near the entrance to Newport Harbor
K	Yellow spar buoy located adjacent to BYC, approximately as shown above
W	Yellow spar buoy located adjacent to Lido Isle, approximately as shown above
Y	Yellow spar buoy located adjacent to Lido Isle, approximately as shown above
Z	Yellow spar buoy located adjacent to Lido Isle, approximately as shown above
6	Aid To Navigation tower (red)
8	Aid to Navigation buoy (red)